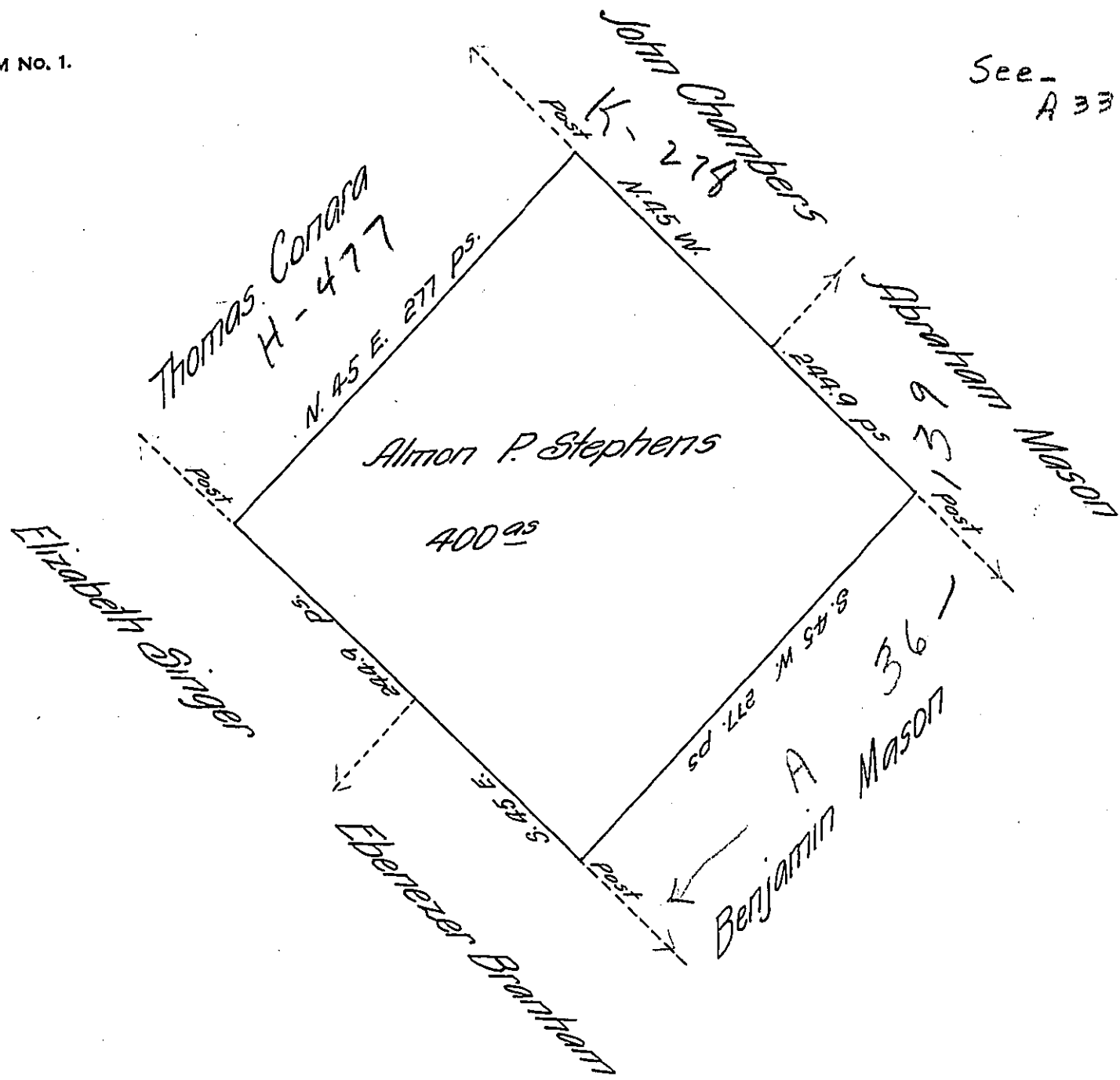


See - A 33-254



Draft of a tract of land (unimproved) situate in the town-
 ship of Jefferson Luzerne County - Containing Four hun-
 dred acres and Six per cent allowance Surveyed the above
 tract of land to Almon P. Stephens the 23^d day of October
 1866 in pursuance of his warrant dated the 2^d day of
 October 1866

To Hon. J. M. Campbell }
 Surveyor Gen.^l

John Sturdevant
 Surveyor for Luzerne Co

Note - A warrant was issued Feb. 19 1793 to Joseph Burr for
 this same land but a Certificate from the Surveyor General
 dated Sept. 13 1866 now on file in this office states that
 "no survey nor entry can be found for the same."

John Sturdevant
 C.S.

IN TESTIMONY that the above is a copy of the original remaining on file in
 the Department of Internal Affairs of Pennsylvania, made
 conformably to an Act of Assembly approved the 16th day of
 February 1833, I have hereunto set my hand and caused
 the Seal of said Department to be affixed at Harrisburg,
 this twenty-eighth day of February 1907

Isaac P. Brown
 Secretary of Internal Affairs.